

ek



eke

ke

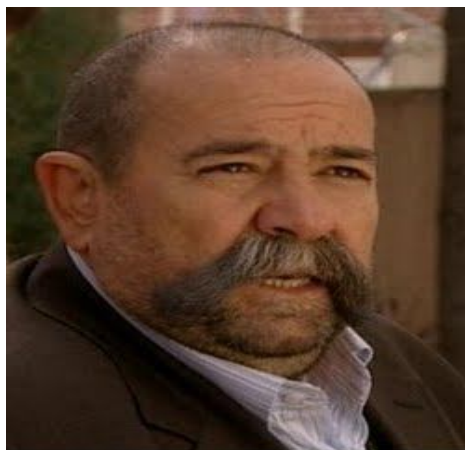
kek



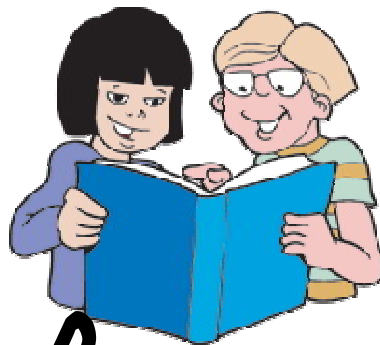
*Kemal*



*Kerim*



Kerem



ak



aku

okun ku

okul



kum



ak

aka ka kaka

kan



kalem



kal kan

Enkan

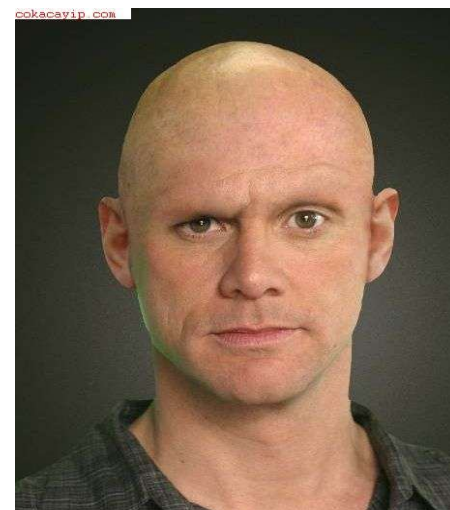




Kamil



toka  kel



Kenan



teke



beke



kilo kin kim



kot

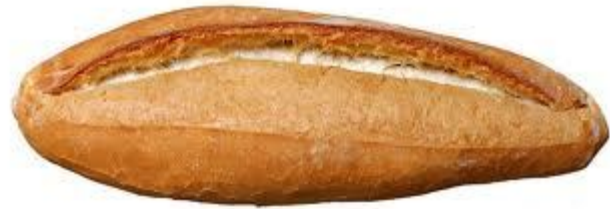
kutu



kumu ekme

②

ekmek



iki